
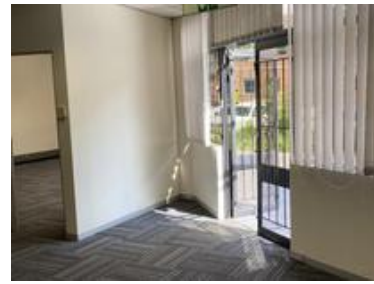


Property introduction by

Paul Schultz

083 345 4453 | paul@factoryspace.co.za

081 756 8554 



168 SQM AAA-GRADE COMMERCIAL OFFICE TO LET IN...

WEB REF CL7255

Floor Size 168 m²

Rental (per m²) R115

Asking Rental R19290

Factory/Warehouse -

Office Size 168 m²

Yard Size -

Availability Immediately

Building Height (m) -

Power (Amps) -

A fantastic 168 sqm ground floor office available at sought-after Sunnyside Office Park. The space has a great existing fit-out with an entrance leading to a spacious open plan workspace, large boardroom, server room, and a private kitchen and bathroom. The unit is fully carpeted and has lovely large windows to allow in loads of natural light! The suite can be fitted to meet tenant requirements.

Extras

Legal: The client hereby agrees that the above property has been introduced by Factory Space (Pty) Ltd to the Client. The Client further confirms that they mandated Factory Space (Pty) Ltd to find and present suitable premises to them.

.....
For The Client

.....
As Witness

.....
Date